

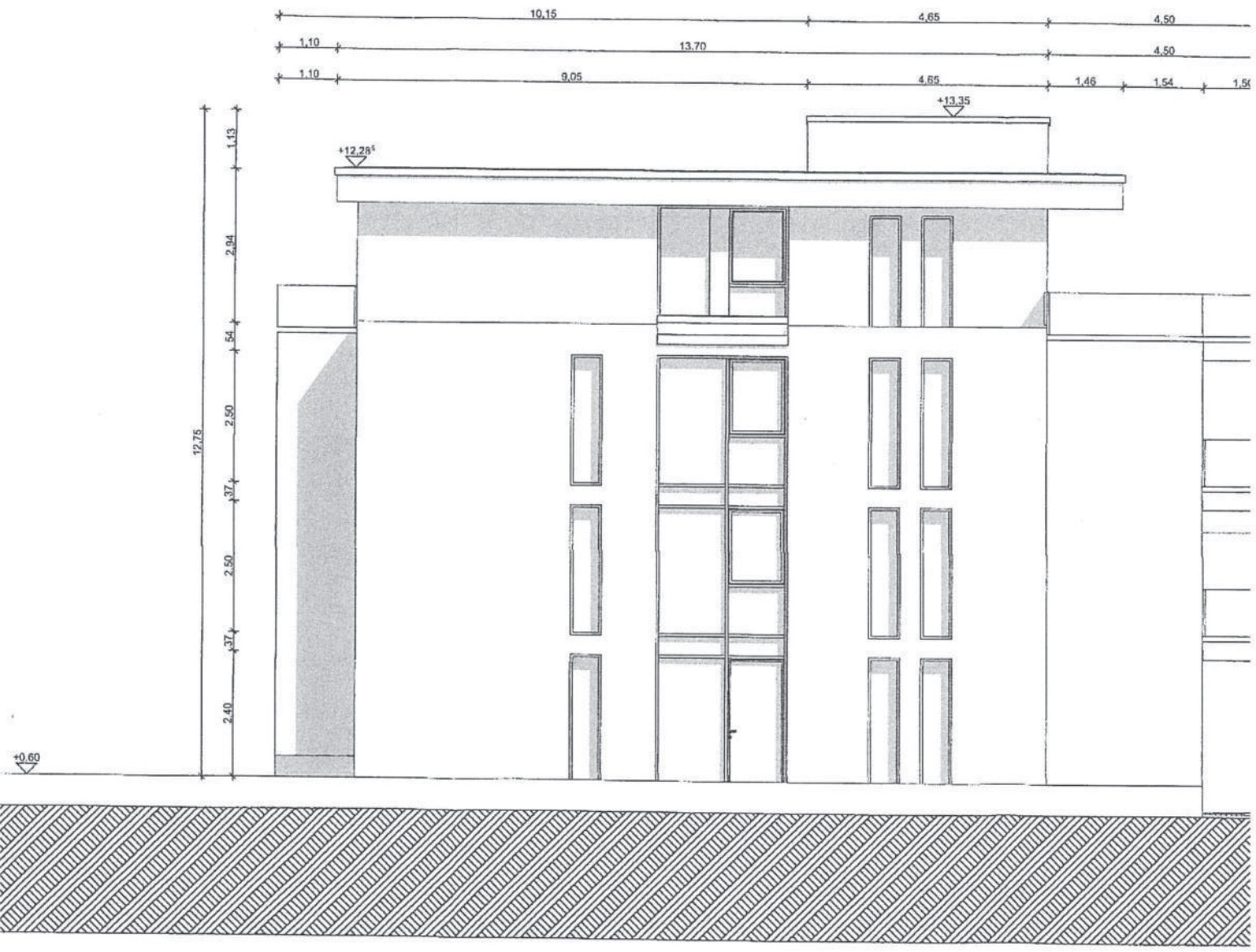


Schillerstraße

Lanzstraße

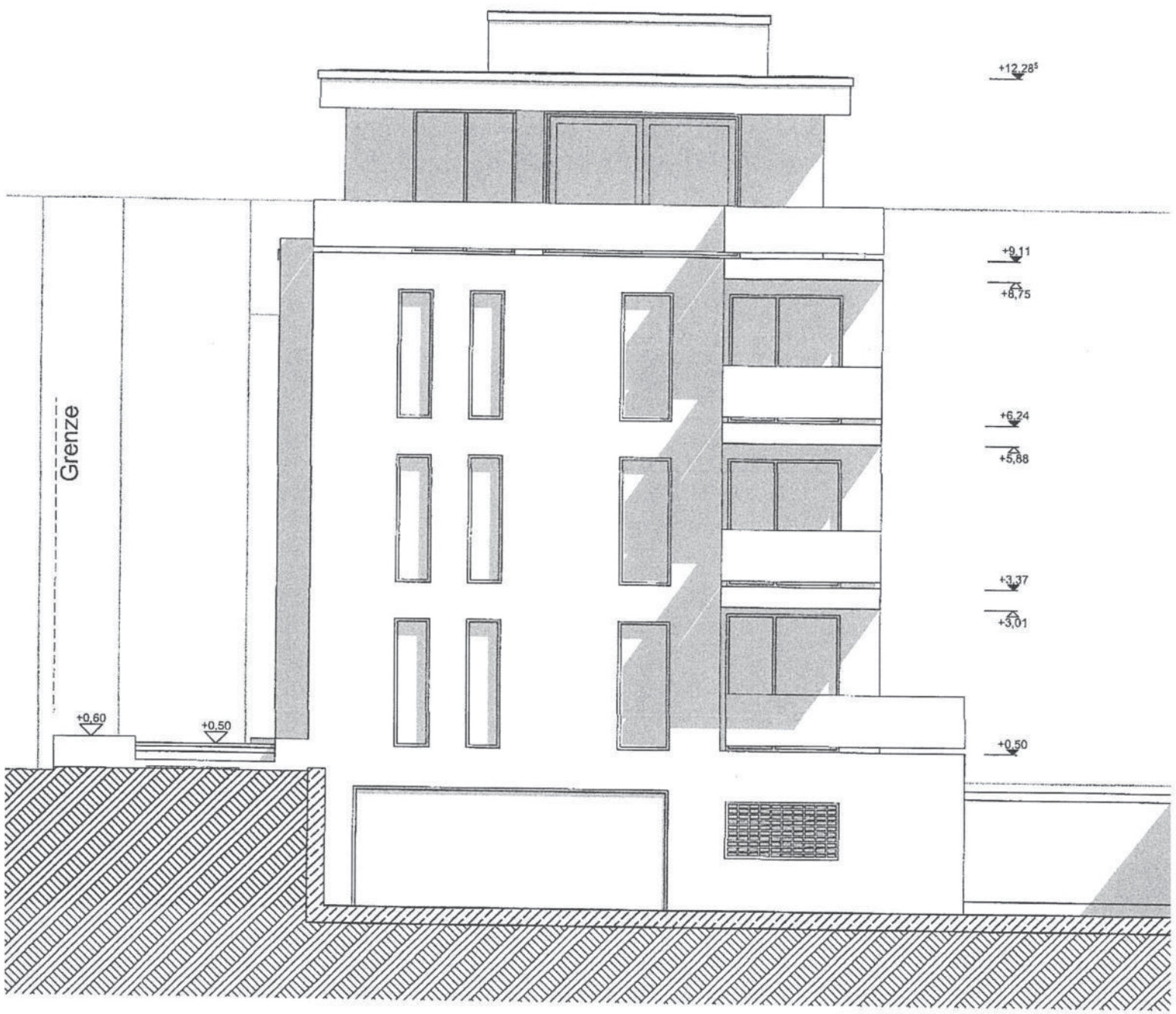
St. Paul

2463/4
2463/2
2461/3
2461/2
2461/4
2461/5
2462/2
2462/7
2462/4
2462/1
2456/2
2456/3
2456/4
2456/5
2454/8
4283/3
4283/2
4283/6
4283/5
4283/4
2135/12
2449/8
2449/9
2449/7
2449/13
2449/15
2252/11
2449/11
2449/10
2449/5
2449/10
2449/11
2449/12
2448/11
2448/12
2448/13
2448/14
2448/15
2448/18
2245/13
2245/14
2245/15
2245/16
20
18
13
11
15
13
11
12
11
10
9
8
7
6
5
4
3
2
1
1B
1A
1
1
6
10
12
13
14
22B
20A
20
22A
24B
24A
20
18



Ansicht Nord

2.88 4.97[±] 1.50 56[±] 1.50



Grenze

+0.60

+0.50

+12.28[±]

+9.11

+6.75

+6.24

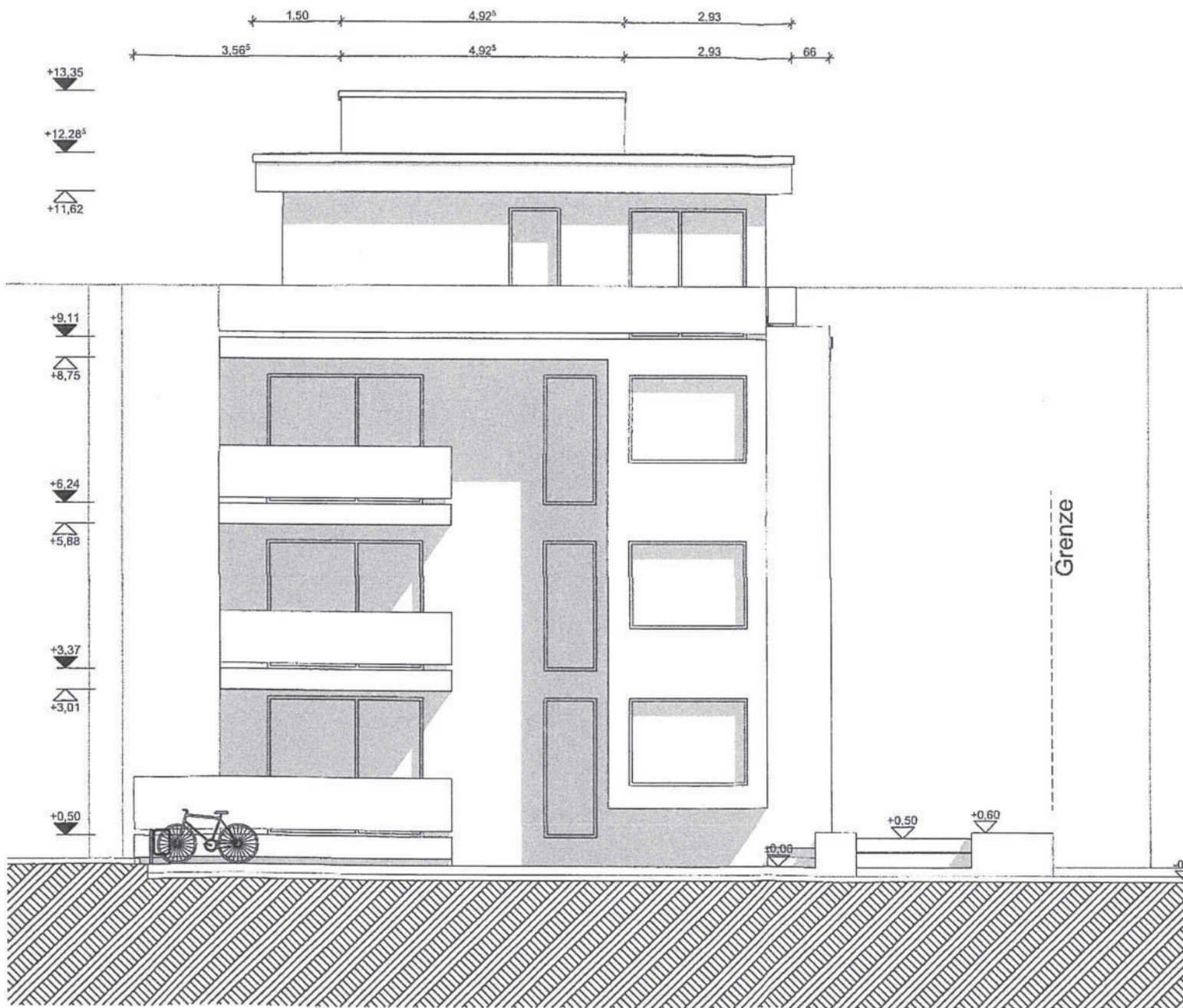
+5.88

+3.37

+3.01

+0.50

Ansicht West



Ansicht Ost



Vorhabensgrundstück 